

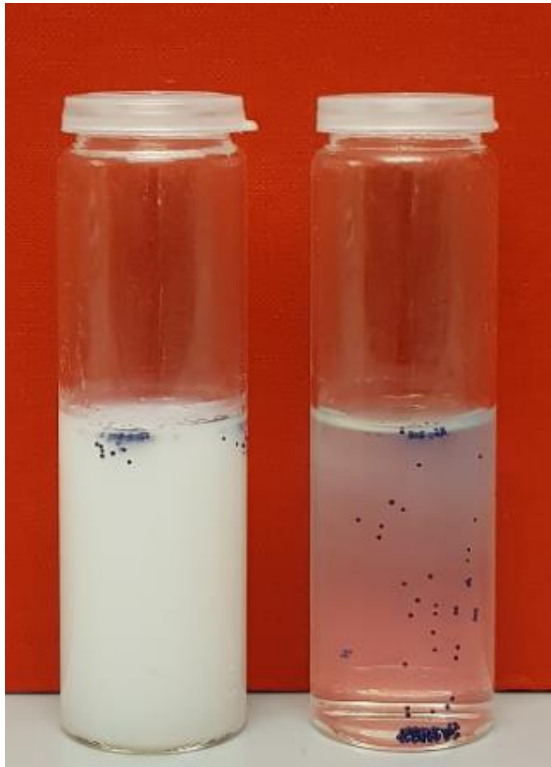


# MICROBIOLOGICAL STABILITY

---



# Exilva – Microbiological Stability



Exilva F 01-L      Xanthan Gum

No biocide added

## Composition:

- 1wt% Exilva or xanthan gum
- Water
- Inert polymeric beads

**Storage:** Room temperature ( 20 – 22 °C) for 1 month

## Observations:

- Exilva maintains its suspending ability in absence of biocide
- Xanthan gum loses its suspending ability due to microbial degradation

☐ Exilva is compatible for use in Biocontrol